

YOUTH AOD/CEP EXEMPLAR SERVICE

HUB & SPOKE MODEL

APRIL 2014



COLLABORATIVE VENTURE

BETWEEN

- ▶ RUBICON YOUTH ALCOHOL & DRUG SERVICES
- ▶ NORTHLAND DISTRICT HEALTH BOARD
 - CHILD AND YOUTH MENTAL HEALTH SERVICE
 - PUBLIC HEALTH UNIT

▶ FUNDED BY

- PRIME MINISTERS YOUTH MENTAL & ADDICTION PROGRAMME – MINISTRY OF HEALTH

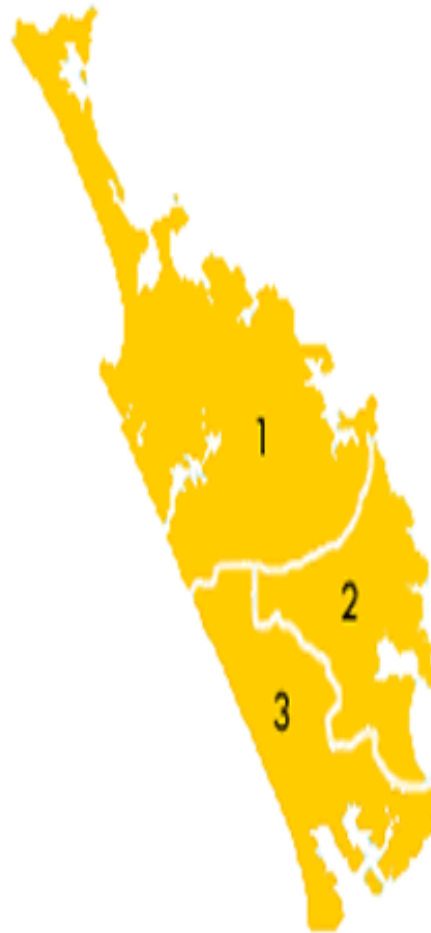
GEOGRAPHICAL

1. Far North District

	Role
• Kaitaia College	790
• Taipa Area School	330
• Broadwood Area School	104
• Whangaroa Area School	114

3. Kaipara District

	Role
• Otamatea High School	113
• Ruawai College	419
• Dargaville High School	446
• Dargaville Intermediate	172

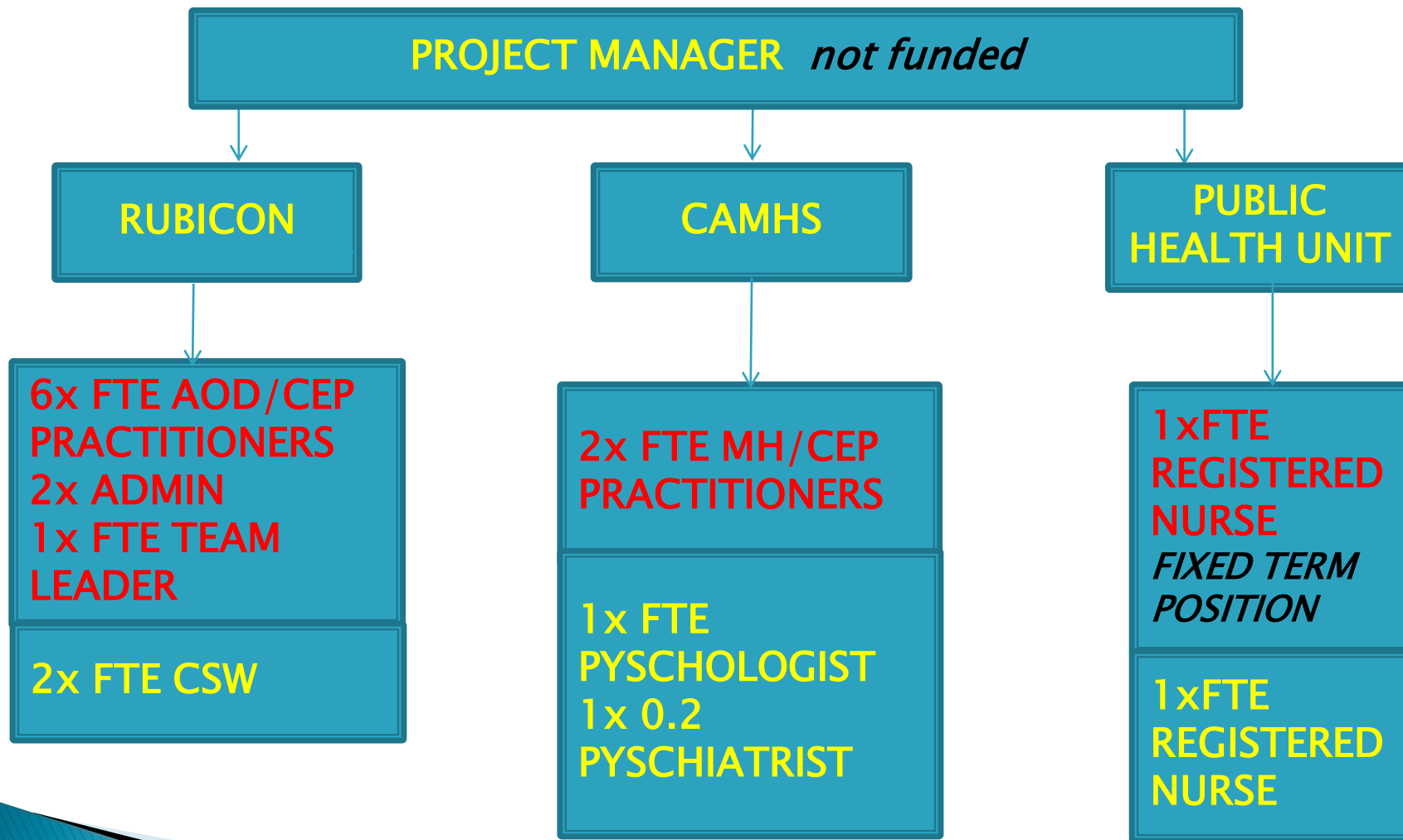


2. Whangarei District

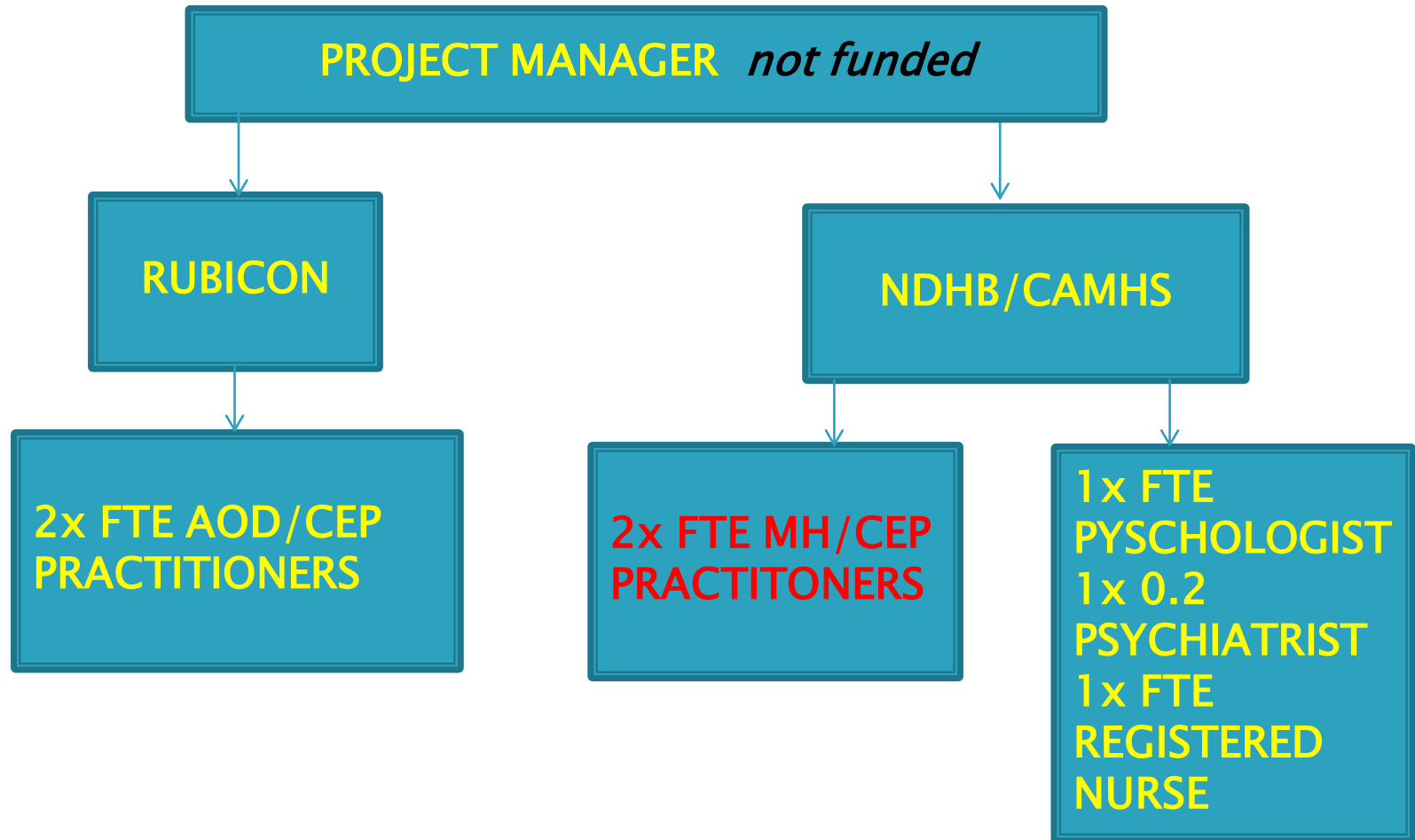
	Role
• Kamo High School	1020
• Tikipunga High School	513
• Bream Bay College	446
• Whangarei Boys High	994
• Whangarei Girls High	1171
• Mangakahia Area School	154
• Tauraroa Area School	494
• Manaia View Primary	222
• Pompallier College	540
• Te Horo Intermediate	42

- Distance 241 kms from Kaipara district to Far North District

AOD/CEP ENHANCED YOUTH SERVICES – WHANGAREI URBAN HUB



CEP ENHANCED YOUTH AOD SERVICES – KAITAIA RURAL SPOKE



PROJECT MANAGEMENT

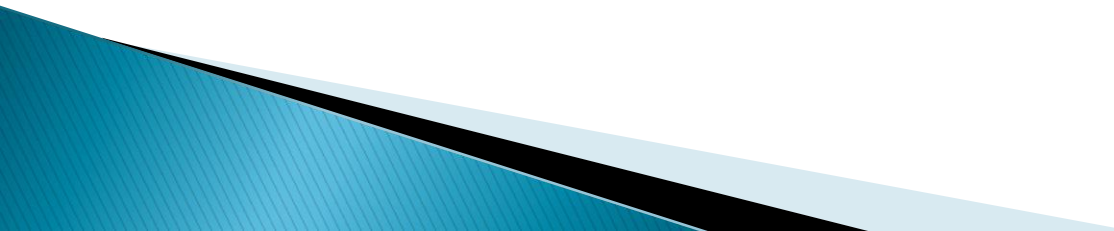
**JENNY ROONEY– GIBBS
PROJECT MANAGER**

- ▶ **DEVELOP & IMPLEMENT YOUTH CEP/AOD SERVICE – WHANGAREI & KAITAIA**
- ▶ **PROVIDE LEADERSHIP & SUPPORT TO YOUTH CEP/AOD TEAM**
- ▶ **DEVELOP ROBUST REPORTING TO PRIMHD, MOH & NDHB**
- ▶ **ESTABLISH EVALUATION PROCESSES & REPORTING SYSTEMS WITH MOH**
- ▶ **DEVELOPING MOU WITH NDHB**
- ▶ **IMPLEMENT SHARED AGREEMENTS WITH LINE MANAGERS – NDHB & RUBICON FOR YOUTH CEP/AOD EXEMPLAR SERVICE**
- ▶ **ALIGN EXISTING NDBH & RUBICON POLICIES & PROCEDURES FOR YOUTH CEP/AOD EXEMPLAR SERVICE**
- ▶ **DEVELOP & IMPLEMENT CLINICAL PATHWAYS**
- ▶ **ORGANISE CLINICAL AUDITS AND OTHER QUALITY INITIATIVES**
- ▶ **DELIVER APPROPRIATE TRAINING**

**JENNY FREEDMAN–HAGUE
NDBH CLINICAL ADVISOR**

OPERATIONAL

**JOHNNY KUMITAU
TEAM LEADER**

- ▶ **ON A DAY TO DAY BASIS, RESPONSIBLE FOR THE SMOOTH RUNNING OF THE YOUTH AOD/CEP SERVICE**
 - ▶ **PROVIDE CLINICAL LEADERSHIP AND SUPPORT**
 - ▶ **RESPONSIBLE FOR ORGANISING MDT MEETINGS**
 - ▶ **COORDINATE, LIAISE AND ORGANISE DRUG TEST PERSONNEL**
 - ▶ **LIAISE WITH ADMINISTRATION PERSONNEL REGARDING DATA COLLECTION AND DATE INPUT**
 - ▶ **WORK WITH THE MANAGERS OF RUBICON AND NDHB TO ORGANISE CLINICAL AUDITS AND OTHER QUALITY INITIATIVES**
- 

OPERATIONAL

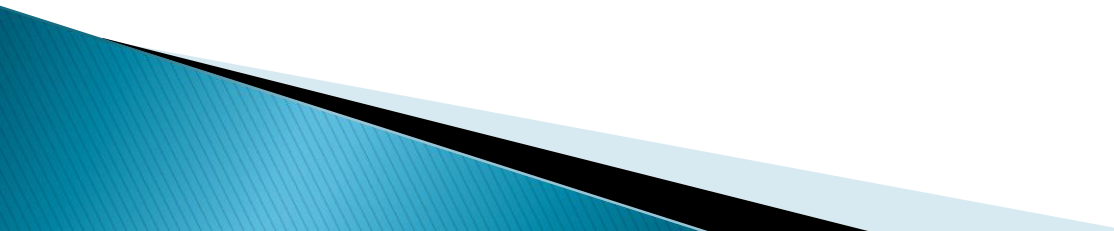
▶ WHANGAREI HUB

- JOB DESCRIPTIONS & KPIs ALIGNED
- WEEKLY MDT MEETING PATHWAYS ESTABLISHED
- TRAINING COMPLETED
 - JADE REPORTING SYSTEM
 - HONSCA
- DEVELOPING CLINICAL PATHWAYS
- FIRST REFERRALS AOD/CEP SERVICE – APRIL 2014

▶ KAITAIA SPOKE

- COMPLETED PRESENTATIONS TO:
 - IWI SERVICES
 - COMMUNITY
 - FAR NORTH SCHOOLS SENIOR MANAGEMENT AND BOARD OF TRUSTEES
 - POLICE YOUTH AID

CHALLENGES

- ▶ **CHANGE MANAGEMENT**
 - ▶ **DIFFERENCE IN NGO & NDHB MANAGEMENT PROCESS**
 - ▶ **DIFFERING PHILOSOPHIES & MODELS OF PRACTICE**
 - ▶ **GEOGRAPHICAL DISTANCE**
 - ▶ **TIMEFRAMES & DEADLINES**
 - ▶ **NEW REPORTING SYSTEMS**
 - ▶ **TRAINING**
- 

WHERE TO FROM HERE?

▶ MAY 2014

- AOD/CEP SERVICE OPERATIONAL IN KAITAIA
- WHANGAREI TEAM TO CO-LOCATE INTO NEW BUILDING MAY 2014

▶ JUNE 2014

- FINALISE PATHWAYS, GUIDELINES, POLICES & PROCEDURES WITH ABSOLUTE QUALITY SERVICES

▶ ONGOING

- WEEKLY PROJECT MEETINGS
- REPORTING & EVALUATION MONITORING
- MONTHLY FUNDED SERVICES MANAGERS MEETINGS
- BUSINESS AS USUAL

- ▶ For further information contact

Jenny Rooney–Gibbs

Project Manager Youth AOD/CEP Service

CEO Rubicon Youth Alcohol & Drug Support Services

PO Box 11063

Whangarei 0140

Phone 094382340

Mobile 021 434773

Email jenny@rubiconyouth.org.nz